

# Vision Performance Management

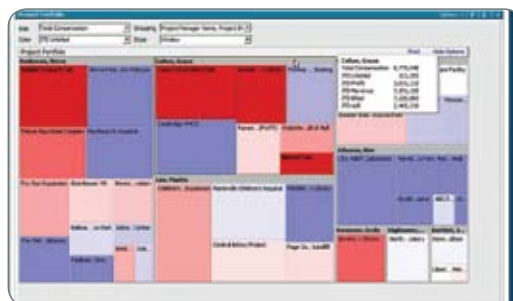
## VISION PERFORMANCE MANAGEMENT

- Pre-Configured Role-Based Dashboards
- Dynamic Analysis of Data by Market Segment, Service Line, Project Manager, etc.
- Drag and Drop Design Tool
- Scalable from Small and Mid-size Businesses to Large Enterprises
- Easy Deployment of Mobile Dashboards

## Timely Access to Critical Business Information

Vision Performance Management offers your project-focused organization a powerful business intelligence tool to help you proactively improve performance and mitigate risk across your organization. Empower your company to move beyond financial reporting to a more comprehensive view of strategic and operational indicators. From interactive graphing options such as trendline, sparkline, and dashboard gauges to visualization reporting, Vision Performance Management allows for easy and efficient analysis of your data – creating better alignment and improving your organizations ability to compete.

The Deltek Vision Analysis cubes provide the foundation for Vision Performance Management. These cubes empower executives and managers by allowing you to take advantage of the vast amount of information stored in the Vision database to make more informed business decisions. Dashboards can be deployed through the Vision Dashboard, Sharepoint or Internet browsers, including Internet Explorer, Safari and Firefox.



**Fig.1:** Deltek Vision Visualization provides a snapshot of your firm's performance.

## KEY FEATURES AND BENEFITS:

- Highlight key indicators to determine project health and resolve issues
- Identify and analyze business trends in specific geographies, markets or disciplines to determine future opportunities and risks
- Point and click filtering, including side-by-side comparisons, that dynamically update dashboard metrics
- Interactive drill down to transaction level details



**Fig. 2:** The pre-configured Executive role-based dashboard provides data about the overall financial health of your business.

## Contact



Advanced Enterprise Systems  
(425) 653-5533  
(425) 653-0303 fax  
2122 112th Ave NE  
Suite C  
Bellevue, WA 98004-2974

[info@aesystems.net](mailto:info@aesystems.net)  
[www.aesystems.net](http://www.aesystems.net)

**Advanced Enterprise Systems is a Deltek partner** and was founded in 1987. We offer a variety of services to business organizations which includes: needs analysis, consulting, implementation, training, conversion services, and accounting related services. AES maintains a staff of highly trained, experienced professionals who maintain technical certifications from all of our partners. Our staff is dedicated to each client's success from implementation through applying the software's features and functionality to best serve their specific needs.

Vision Performance Management includes the following components:

- Pre-configured role based dashboards that can be tailored to meet your unique business needs
- A Dashboard Designer tool that can be used to create custom performance dashboards/scorecards
- Vision's Analysis Cubes power the dashboards through their multi-dimensional data analysis capabilities. Preconfigured cubes give instant access to consolidated financial and project data.
- Visualization Reporting provides a single interactive snapshot into the health of your organization using a combination of shapes and colors representing project-related metrics and risks.

### TAILORED, ROLE-BASED DASHBOARDS

Five pre-configured role-based dashboards are included with Vision Performance Management. These dashboards allow critical information to be distributed and shared, giving your management team and staff the ability to collaborate and make key decisions based on key performance metrics. Our pre-configured dashboards include:

**Executive Dashboard** - designed to provide an enterprise-wide view of overall company health.

**Principal Dashboard** - designed for individuals who are responsible for a group of project managers and for the successful delivery of a group of projects.

**Organization Leader Dashboard** - designed for those in leadership roles who are responsible for people, projects and financial performance of their organization.

**Project Manager Dashboard** - focused around individual projects and the performance of a project manager's portfolio.

**Finance Dashboard** – designed to provide a visual view an income statement or balance sheet with filters by organization, type of account and year – making it easier to compare trends over time and complete comparison analyses of spending to revenue

Each of these pre-configured dashboards can be tailored to the individual needs of an organization. Custom dashboards can be created using the Dashboard Designer tool.

### ANALYSIS CUBES

The Deltek Vision analysis cubes use Microsoft SQL Server Analysis Services and Microsoft Excel to consolidate data into flexible views that empower decision makers. With Analysis Services, Deltek Vision data is stored in a central data repository populated directly from your Vision database, but compiled in a format that is optimized for rapid query and analysis. The cube views presented in the Vision Performance dashboards are run off this stored data, which is refreshed on a schedule defined by the customer or on demand. Though database size drives processing times, the largest Vision databases take only minutes to refresh.

### VISUALIZATION REPORTING

Deltek Vision Visualization provides an interactive snapshot into the health of your professional services organization. Trends and risks can be analyzed quickly by drilling down to underlying performance metrics to determine an appropriate course-of-action and improve business performance.

Visualization provides a graphical representation of a project portfolio through a combination of shapes and colors representing project-related metrics and risks.